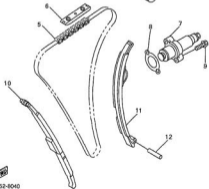


Block Title:  
CAMSHAFT - CHAIN

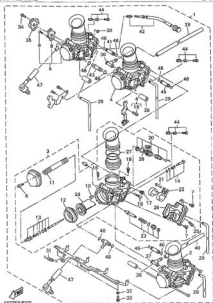
Ref. No.	Part No.	Description
1	4XV-12171-00-00	CAMSHAFT 1
2	4XV-12176-00-00	SPROCKET, CAM CHAIN
3	4XV-12181-00-00	CAMSHAFT 2
4	99105-87342-00	BOLT, WASHER BASED
5	94991-48130-00	CHAIN
6	50E-12241-00-00	SLIDE STOPPER 2
7	4XV-12210-00-00	TENSIONER ASSY, CA
8	4FM-12213-00-00	GASKET, TENSOR CASE
9	99927-58025-00	BOLT, FLANGE
10	4XV-12251-00-00	DAMPER, CHAIN 1
11	4XV-12252-00-00	DAMPER, CHAIN 2
12	99907-44190-00	PIN, DOWEL



Catalog Title:  
1999 YZFR1L

Stock No.  
B-5

Stock Title:  
CARBURETOR



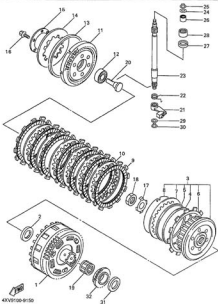
4XV352-010

Ref. No.	Part No.	Description
1	4XV-14901-20-00	* CARBURETOR ASSY 1
2	4XV-14901-30-00	* CARBURETOR ASSY 1
2	4XV-14902-20-00	* CARBURETOR ASSY 2
2	4XV-14903-30-00	* CARBURETOR ASSY 2
3	4XV-14903-20-00	* CARBURETOR ASSY 3
3	4XV-14903-30-00	* CARBURETOR ASSY 3
4	4XV-14904-20-00	* CARBURETOR ASSY 4
4	4XV-14904-30-00	* CARBURETOR ASSY 4
5	40M-14216-00-00	* SCREW
6	96507-0010-00	SCREW PANHEAD
7	4KQ-14995-00-00	* BRACKET
8	96707-04008-00	* SCREW FLAT
9	45V-14968-00-00	* CAP
10	45V-14933-00-00	* SPRING, DIAPHRAGM
11	45V-24411-00-00	* DIAPHRAGM
12	4XV-14901-30-00	* NEEDLE SET
13	45V-14105-00-00	* PILOT SCREW SET
15	96507-04014-00	* SCREW PAN HD N15
15	96507-0010-00	* SCREW PAN HEADCRK
16	302-14231-35-00	* JET MAIN #130
17	8CC-14232-24-00	* JET, AIR#120
18	40M-14142-15-00	* JET, PILOT (# 15)
19	40M-14107-15-00	* NEEDLE VALVE SET
20	620-14196-00-00	* PIN/FLOAT
21	45V-14965-00-00	* FLOAT
22	45V-1410A-00-00	* STARTER SET
23	45V-14112-00-00	* VALVE, THROTTLE 1
24	4KP-14791-00-00	* PLUG, DRAIN
25	4XV-14562-00-00	* O-RING
26	4XV-14275-00-00	* SPRING
27	1FN-14566-00-00	* SCREW
28	3JL-14197-00-00	* PIPE
29	28V-14902-00-00	* WASHER
30	45V-14839-00-00	* SPRING
31	49K-14227-20-00	* PACKING
32	4XV-24463-00-00	* SCREW
33	49M-24463-00-00	* SCREW
34	45V-05885-00-00	* THROTTLE SENSOR AS
35	45V-14887-00-00	* HOSE
36	4XV-14149-30-00	* PIPE
37	43V-14149-40-00	* PIPE
38	45V-14887-30-00	* HOSE
39	43V-80485-10-00	* HOSE
40	43V-14149-40-00	* PIPE
41	43V-14103-00-00	* THROTTLE SCREW SET
42	43V-14149-90-00	* PIPE
43	35N-1499K-00-00	* STOP SCREW SET
44	43V-14149-70-00	* PIPE
45	36V-14147-00-00	* O-RING
46	3UN-14348-00-00	* PIPE 1
47	3UN-1416A-20-00	* O-RING

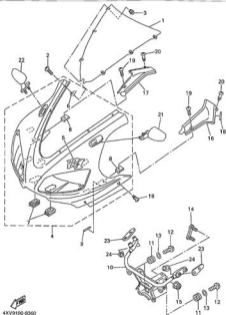
Catalog Title:  
1999 YZFR1L

Block No.  
B-12

Block Title:  
CLUTCH



Ref. No.	Part No.	Description
1	400-18150-00-00	UNAVAILABLE
2	284-18154-00-00	PLATE,THRUST 1
3	400-18370-00-00	CLUTCH BOSS ASSY
4	400-18384-00-00	= PLATE,SEAT
5	26Y-18063-00-00	= SPRING,CLUTCH BOSS
6	400-18321-00-00	= PLATE, FRICTION 2
7	2HT-18325-00-00	= PLATE,CLUTCH 2
8	2HT-18338-00-00	= RING,CLUTCH BOSS
9	24E-18321-13-00	PLATE,FRICTION
10	2HT-18325-00-00	PLATE,CLUTCH 2
11	400-18351-00-00	PLATE, PRESSURE 1
12	93308-09394-00	BEARING
13	26Y-18335-00-00	HOUSING,SPRING
14	26Y-18334-00-00	SPRING,CLUTCH 2
15	1TX-18352-00-00	PLATE,PRESSURE 2
16	96817-08005-00	BOLT,FLANGE
17	96215-35218-00	WASHER,LOCK
18	96170-23023-00	NUT,HEXAGON
19	93318-22605-00	BEARING
20	400-18356-00-00	ROD, PUSH 1
21	400-18340-00-00	PUSH LEVER ASSY
22	96908-18482-00	SPRING, TORSION
23	400-18382-00-00	AXLE, PUSH LEVER
24	92907-08600-00	WASHER, (STA)
25	96901-07900-00	CIRCLIP
26	93317-11000-00	BEARING,CYL.#17
27	93102-15212-00	OIL SEAL,SD-TYPE
28	93316-21500-00	BEARING,CYL.#15
29	93251-10814-00	WASHER,PLATE
30	96901-08600-00	CIRCLIP
31	400-18154-00-00	PLATE, THRUST 1
32	400-13264-00-00	SPROCKET, DRIVE

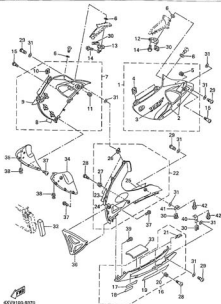


Ref. No.	Part No.	Description
1	4XV-28381-10-00	WINDSHIELD
2	90150-05023-00	SCREW,ROUND HEAD
3	90179-05023-00	NUT,SPEC'L SHAPE
4	4XV-Y2833-28-2X	BODY,FRONT UPPER
4	4XV-Y2833-38-1X	BODY,FRONT UPPER
5	4XV-28315-10-00	+ EMBLEM
5	4XV-28315-20-00	+ EMBLEM
6	4FM-2834W-00-00	+ PROTECTOR 2
7	4XV-28348-00-00	+ CAP
8	90183-05014-00	+ NUT,SPRING
9	4XV-28346-00-00	DAMPER
10	4XV-28356-00-00	STAY 1
11	4XV-80913-00-00	DAMPER
12	97707-00018-00	SCREW,TAPPING
13	90201-05032-00	WASHER,PLATE
14	4XV-28335-00-00	PLATE
15	99807-08200-00	NUT,SELF-LOCKING
16	4XV-28370-00-00	PANEL,CONSOLE 1
17	4XV-28378-00-00	PANEL,CONSOLE 2
18	4BU-24141-00-00	PROTECTOR,FUEL TANK
19	90184-05013-00	SCREW,BINDING
20	3XV-28386-00-00	HEAD
21	4FM-28280-01-00	REAR VIEW MIRROR A
22	4FM-28280-01-00	REAR VIEW MIRROR A
23	4XV-28288-00-00	PLATE,MIRROR FITT
24	90178-08055-00	NUT,CROWN

Catalog Title:  
1999 YZFR1L

Block No:  
E-10

Block Title:  
COWLING 2



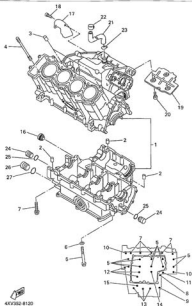
42  
42V110-0370

Ref. No.	Part No.	Description
1	4KV-Y281J-20-0K	PANEL ASSEMBLY 1
1	4KV-Y281J-30-P1	PANEL ASSEMBLY 1
2	4KV-28301-00-00	+ GRAPHIC SET, LOWER
2	4KV-28301-10-00	+ GRAPHIC SET, LOWER
3	4KV-28304-00-00	+ EMBLEM 1
3	4KV-28304-10-00	+ EMBLEM 1
4	4KV-2177L-00-00	+ PLATE, SPRING
5	90480-13398-00	+ GROMMET
6	27K-2175T-00-00	WASHER, SPECIAL 1
7	4KV-Y283V-20-0K	PANEL ASSEMBLY 2
7	4KV-Y283V-30-P1	PANEL ASSEMBLY 2
8	4KV-28303-00-00	+ GRAPHIC SET, LOWER
8	4KV-28303-10-00	+ GRAPHIC SET, LOWER
9	4KV-28304-00-00	+ EMBLEM 1
9	4KV-28304-10-00	+ EMBLEM 1
10	4KV-2177L-00-00	+ PLATE, SPRING
11	90480-13398-00	+ GROMMET
12	4KV-28364-00-00	BRACKET 1
13	4KV-28368-00-00	BRACKET 2
14	90119-06052-00	BOLT, WITH WASHER
16	90190-06036-00	SCREW, ROUND HEAD
16	4KV-Y2808-20-P2	COVER ASSY, UNDER
16	4KV-Y2808-30-P1	COVER ASSY, UNDER
17	4KV-28328-20-00	+ EMBLEM
17	4KV-28328-30-00	+ EMBLEM
18	4KV-28338-20-00	+ EMBLEM
18	4KV-28338-30-00	+ EMBLEM
19	4KV-2153Z-00-00	+ EMBLEM, YAMAHA
19	4KV-2153Z-10-00	+ EMBLEM, YAMAHA
20	90480-13398-00	+ GROMMET
21	4KV-2177L-00-00	+ PLATE, SPRING
22	4KV-Y2809-40-P1	COVER ASSY 2, UNDE
22	4KV-Y2809-50-P2	COVER ASSY 2, UNDE
23	4KV-28328-20-00	+ EMBLEM
23	4KV-28328-30-00	+ EMBLEM
24	4KV-28338-20-00	+ EMBLEM
24	4KV-28338-30-00	+ EMBLEM
25	90231-00210-00	+ EMBLEM, YAMAHA
25	90234-00280-00	+ EMBLEM, YAMAHA
26	4KV-2177L-00-00	+ PLATE, SPRING
27	90480-13398-00	+ GROMMET
28	90190-06036-00	SCREW, ROUND HEAD
29	3KV-28306-00-00	HEAD
30	4KV-2177L-00-00	PLATE, SPRING
31	27K-2175T-00-00	WASHER, SPECIAL 1
32	4SV-28271-00-00	DAMPER
33	4KV-28406-00-00	SEAT 2
34	4KV-28366-00-P1	PANEL, INNER 1
34	4KV-28366-00-P2	PANEL, INNER 1
35	4KV-28366-00-P1	PANEL, INNER 2
36	4KV-28366-00-P2	PANEL, INNER 2
36	4KV-28366-00-P1	PANEL, INNER 3
36	4KV-28366-00-P2	PANEL, INNER 3
37	91704-40012-00	SCREW, TAPPING(SHM)
38	90269-07077-00	RIVET
39	91707-60016-00	SCREW, TAPPING
40	4KV-2836F-00-00	BRACKET 3
41	4KV-2836G-00-00	BRACKET 4
42	95807-08012-00	BOLT, FLANGE

Catalog Title:  
1999 YZFR1L

Block No.  
B-8

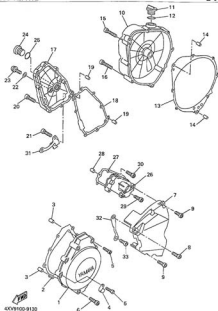
Block Title:  
CRANKCASE



Ref. No.	Part No.	Description
1	40V-15100-00-00	CRANKCASE ASSY
2	99030-10014-00	PIN,DOWEL
3	99030-10114-00	PIN,DOWEL
4	90115-10019-00	BOLT, STUD
5	90105-08945-00	BOLT, WASHER BASED
6	90201-09619-00	WASHER,PLATE
7	99817-09059-00	BOLT,FLANGE
8	99817-09050-00	BOLT,FLANGE
9	99817-09059-00	BOLT,FLANGE
10	90109-09523-00	BOLT
11	99817-09059-00	BOLT,FLANGE
12	99817-09070-00	BOLT,FLANGE
13	99817-09048-00	BOLT,FLANGE
14	99814-09050-00	BOLT,FLANGE
15	99817-09059-00	BOLT,FLANGE
16	297-10381-00-00	GAUGE LEVEL PLATE, BREATHER
17	40V-11180-00-00	PLATE, BREATHER
18	91317-09012-00	BOLT,HEX SKT HEAD
19	40V-11140-00-00	PLATE, BREATHER 2
20	91317-09012-00	BOLT,HEX SKT HEAD
21	90440-10107-00	HOSE
22	90498-08104-00	CLIP
23	90497-14015-00	CLIP,SCISSOR
24	90338-18260-00	PLUG
25	93210-12799-00	O-RING
26	90338-20263-00	PLUG
27	93210-16314-00	O-RING

Catalog Title:  
1999 YZFR1L

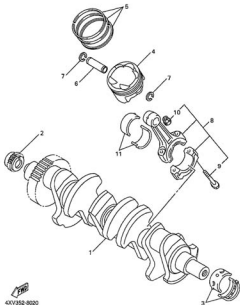
Block No.  
B-9



4XV9100-9130

Block Title:  
CRANKCASE COVER 1

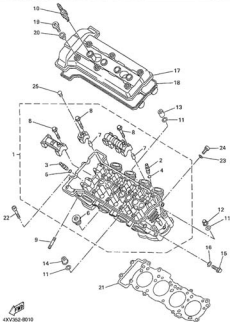
Ref. No.	Part No.	Description
1	4XV-15411-00-00	COVER, CRANKCASE 1
2	4XV-15451-00-00	GASKET, CRANKCASE
3	99500-08012-00	PIN, DOWEL
4	90480-10138-00	HOLDER, CLUTCH CABLE
5	91314-08035-00	BOLT, SOCKET HEAD
6	91314-08020-00	BOLT (JIS)
7	4XV-15418-00-00	COVER, OIL PUMP
8	90110-08234-00	BOLT, HEX SKT HEAD
9	91314-08020-00	BOLT (JIS)
10	4XV-15401-00-00	COVER, CRANKCASE 2
11	3P8-15362-00-00	PLUG, OIL LEVEL
12	90210-27194-00	O-RING
13	4XV-15481-00-00	GASKET, CRANKCASE
14	90250-08020-00	PIN, STRAIGHT
15	91314-08040-00	BOLT, SOCKET
16	91314-08030-00	BOLT (JIS)
17	4XV-15418-00-00	COVER, OIL PUMP
18	4XV-15458-00-00	GASKET, OIL PUMP C
19	99500-08012-00	PIN, DOWEL
20	91314-08020-00	BOLT (JIS)
21	91314-08020-00	BOLT (JIS)
22	90480-08143-00	GASKET
23	90214-08012-00	BOLT, BUTTON HEAD
24	90380-32118-00	PLUG, STRAIGHT SCREW
25	90210-32170-00	O-RING
26	500-15420-00-00	UNAVAILABLE
27	4XV-15463-00-00	GASKET, CARBURETOR
28	90500-08012-00	PIN, DOWEL
29	91314-08020-00	BOLT (JIS)
30	91314-08030-00	BOLT, SOCKET
31	4XV-15441-00-00	HOLDER, CLUTCH CAB
32	4XV-15113-00-00	PLATE
33	90110-08138-00	BOLT, HEX SKT HEAD



Ref. No.	Part No.	Description
1	40V-11411-00-00	CRANKSHAFT
2	40V-11548-00-00	SPROCKET, CAM CHA
3	30M-11416-00-00	PLANE BRNG,CRSF 1
3	30M-11416-10-00	PLANE BRNG,CRSF 1
3	30M-11416-20-00	PLANE BRNG,CRSF 1
3	30M-11416-40-00	PLANE BEARING, CRA
3	30M-11416-80-00	PLANE BEARING, CRA
4	40V-11621-00-00	PISTON (STD)
5	40V-11603-00-00	PISTON RING SET (S)
6	40V-11623-00-00	PIN, PISTON
7	90468-10289-00	CLIP
8	40V-11850-00-00	CONNECTING ROD ASS
9	40V-11854-00-00	= BOLT, CONNECTING R
10	90179-08307-00	= NUT, SPEC'L SHAPE
11	30M-11855-00-00	PLANE BRNG,CON ROD
11	30M-11855-10-00	PLANE BRNG,CON ROD
11	30M-11855-40-00	PLANE BEARING, CON
11	30M-11855-80-00	PLANE BEARING, CON



Block Title:  
**CYLINDER**

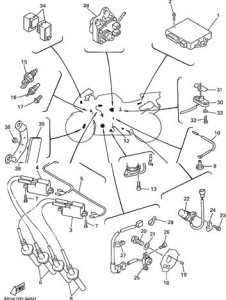


Ref. No.	Part No.	Description
1	4XV-11181-00-00	CYLINDER HEAD ASSY
2	3TJ-11133-10-00	= GDE INTK VLV 1 DIS
3	1W3-11133-11-00	= GDE INTK VLV 1 DIS
4	93440-07149-00	= CIRCLIP, OUTER
5	93440-10153-00	= CIRCLIP, OUTER
6	90340-27129-00	= PLUG, STRAIGHT SCR
7	91858-18023-00	= PIN, DOWEL
8	90109-08384-00	= BOLT, WASHER BASED
9	95617-08625-00	BOLT, STUD 3
10	94701-00318-00	UNAVAILABLE
11	90301-10384-00	WASHER, PLATE
12	90178-10076-00	NUT, CROWN
13	90178-10683-00	NUT
14	90178-10693-00	NUT
15	95027-08012-00	BOLT, SMALL FLANGE
16	90300-08119-00	WASHER, PLATE
17	4XV-11181-00-00	COVER, CYLINDER HE
18	4XV-11183-00-00	GASKET, HEAD COVER
19	90109-08693-00	BOLT
20	4K3-11115-00-00	RUBBER MOUNT 1
21	4XV-11181-00-00	GASKET, CYLINDER H
22	91317-09593-00	BOLT (4x7)
23	90300-08014-00	GASKET
24	91317-09512-00	BOLT, HEX 6KT HEAD
25	90338-08174-00	PLUG, SPEC'L SHAPE

Catalog Title:  
1999 YZFR1L

Stock No.  
F-8

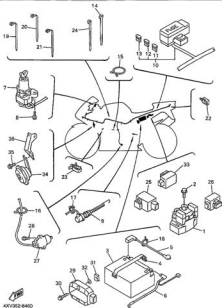
Stock Title:  
ELECTRICAL 1



Ref. No.	Part No.	Description
1	4XV-82385-30-00	IGNITOR UNIT ASSY
1	4XV-82385-40-00	IGNITOR UNIT ASSY
2	97787-80018-00	SCREW, TRUSS
3	4XV-82310-80-00	IGNITION COIL ASSY
4	4XV-82309-80-00	IGNITION COIL ASSY
5	4XV-82308-80-00	WIRE, SUB LEAD
6	4XV-82370-80-00	PLUG CAP ASSY
7	97787-80025-00	SCREW, TAPPING
8	40M-82540-00-00	NEUTRAL SWITCH ASSY
9	90430-10148-00	GASKET
10	4XV-82541-00-00	WIRE, LEAD
11	4XV-88720-00-00	OIL LEVEL GAUGE AS
12	579-12491-00-00	CLAMP 1
13	91217-06014-00	BOLT
14	90485-06076-00	CLAMP
15	3LN-82580-81-00	THERMO SWITCH ASSY
16	114-82581-80-00	THERMO UNIT
17	99027-06010-00	BOLT, FLANGE(4MM)
18	4XV-81673-00-00	ROTOR
19	90894-29151-00	PIN,DOWEL
20	90180-10290-00	BOLT,WASHER BASED
21	90201-10708-00	WASHER, PLATE(18X)
22	4XV-83758-00-00	SENSOR, SPEED
23	91217-06014-00	BOLT
24	90485-06028-00	CLAMP
25	4XV-81675-10-00	PICK-UP ASSY
26	91217-06012-00	BOLT, HEX SXT HEAD
27	90485-08181-00	CLAMP
28	47M-85820-00-00	SERVO MOTOR ASSY
29	90482-08225-00	CLAMP
30	4XV-85752-00-00	SENDER UNIT ASSY,
31	82X-88763-00-00	GASKET,SENDER UNIT
32	90148-08011-00	SCREW, SPECIL SHAPE
33	90202-05183-00	WASHER, PLATE
34	4XV-81960-00-00	RELAY ASSY
35	290-85110-00-00	FRT REFLECTOR ASSY
36	95707-09500-00	NUT, FLANGE (35MM)
37	4XV-85112-00-00	BRACKET, REFLECTOR
38	90201-08788-00	WASHER, PLATE

Catalog Title:  
1999 YZFR1L

Book No.  
F-10



4XV-01640-00

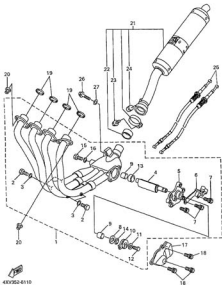
Book Title:  
ELECTRICAL 2

Ref. No.	Part No.	Description
1	4YR-01940-00-00	STARTER RELAY ASSY
2	95027-09026-00	BOLT SMALL FLANGE
3	4TX-02100-01-00	CG 01126-4 BATTERY
4	3LA-02101-01-00	UNAVAILABLE
5	4XV-02115-00-00	WIRE, PLUS LEAD
6	4XV-02116-00-00	WIRE, MINUS LEAD
7	4XV-02301-10-00	MAIN SWITCH-STEERI
8	90199-09005-00	BOLT
9	4XV-02320-00-00	STOP SWITCH ASSY
10	4XV-02390-10-00	WIRE HARNESS ASSY
11	30Y-02151-00-00	+ FUSE
12	20XV-02151-00-00	+ FUSE
13	20YV-02151-00-00	+ FUSE
14	90464-12036-00	CLAMP
15	90464-30040-00	CLAMP
16	90464-19039-00	CLAMP
17	9YR-13491-00-00	CLAMP 1
18	90464-13077-00	CLAMP
19	90464-13073-00	CLAMP
20	90464-15195-00	CLAMP
21	90464-12036-00	CLAMP
22	90464-19021-00	CLAMP
23	90464-19187-00	CLAMP
24	90462-13275-00	CLAMP
25	4TV-01950-00-00	RELAY ASSY
26	4XV-01954-00-00	RELAY ASSY
27	3LD-02568-00-00	SWITCH, SIDE STAND
28	90157-00079-00	SCREW, PAN
29	4XV-01950-01-00	RECTIFIER & REGULATO
30	95027-09026-00	BOLT FLANGE
31	90183-09023-00	NUT, SPRING (HE)
32	90202-05187-00	WASHER PLATE
33	4M7-03203-01-00	FLASHER RELAY ASSY
34	3YR-00271-01-00	HORN
35	95007-09010-00	BOLT FLANGE
36	4XV-2134K-00-00	BRACKET, HORN

Catalog Title:  
1999 YZFR1L

Stock No.  
B-7

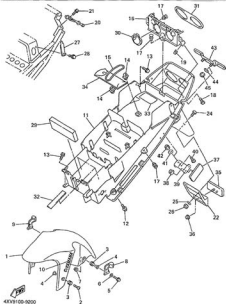
Stock Title:  
EXHAUST



Ref. No.	Part No.	Description
1	40V-14610-00-00	EXHAUST PIPE ASSY
2	87580-08006-00	= BOLT
3	92990-08000-00	= WASHER
4	45V-14621-00-00	= ARM, SH-APT (VALVE)
5	30M-14611-00-00	= HOUSING
6	2TK-14667-01-00	= BRACKET
7	90119-08116-00	= BOLT WITH WASHER
8	90201-19086-00	= WASHER PLATE
9	45V-14638-00-00	= COLLAR
10	2TK-14666-01-00	= PULLEY
11	90201-09074-00	= WASHER PLATE
12	87580-09012-00	= BOLT (SA)
13	90387-10617-00	= COLLAR
14	30M-14650-00-00	= SPRING/HOOK
15	91380-04006-00	= BUSH
16	92990-04600-00	= WASHER
17	4-D-14625-00-00	PROTECTOR, EXHAUST
18	90119-08187-00	BOLT (CLIP)
19	47M-14613-00-00	GASKET, EXST PIPE
20	90179-08410-00	NUT, SPEC. SHAPE
21	40V-14710-11-00	MUFFLER ASSY 1
22	40V-14714-00-00	= GASKET, MUFFLER
23	90214-08025-00	= BOLT, FLANGE
24	47M-24181-00-00	= DAMPER, LOCATING 1
25	40V-11306-00-00	CABLE PULLEY ASSY
26	90217-08040-00	BOLT, FLANGE
27	90201-08612-00	WASHER PLATE

Catalog Title:  
1999 YZFR1L

Block No.  
C-8



Block Title:  
FENDER

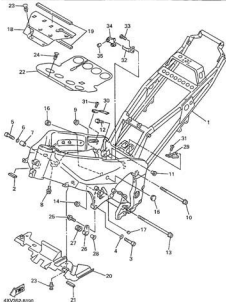
Ref. No.	Part No.	Description
1	40V-21811-00-70	FENDER, FRONT
2	40V-21811-00-P1	FENDER, FRONT
3	90154-09081-00	SCREW BINDING
4	90480-12073-00	GROMMET
4	90387-09538-00	COLLAR
5	97907-09030-00	BOLT HEXAGON
6	92907-09030-00	WASHER (STA)
7	95707-09030-00	NUT FLANGE (SMA)
8	40V-25675-00-00	HOLDER, BRAKE HOSE
9	40V-25676-00-00	HOLDER, BRAKE HOSE
10	99031-00100-00	EMBLEM, YAMAHA
11	40V-21811-00-00	FENDER, REAR
12	90118-09046-00	BOLT (DOM)
13	90118-09044-00	BOLT, HEXAGON
14	90494-07259-00	CLAMP
15	40V-21376-00-00	BAND, TOOL
16	40V-21170-00-00	BRACKET, TAILLIGHT
17	90289-07977-00	RIVET
18	90154-09013-00	SCREW BINDING
19	90183-09061-00	NUT SPRING
20	40V-21654-00-00	WIRE
21	90706-09040-00	BOLT WASHER BASED
22	40V-85132-00-00	BRACKET, REFLECTOR
23	90149-04218-00	SCREW SPEC'L SHAPE
24	90201-04018-00	WASHER (AFM)
25	99807-04100-00	NUT UNRES
26	40V-21398-00-00	HANGER, HELMET
27	95807-00016-00	BOLT FLANGE
28	40V-21639-00-00	DAMPER 2
29	40V-2172X-00-00	COVER, TAILLIGHT
30	40V-21869-00-00	SEAL
31	1A2-2834E-00-00	DAMPER (L.F)
32	40V-2179V-10-00	PLATE, EPA (NON C)
33	40V-2179B-10-00	PLATE, EPA 2(CALIF)
34	40V-28100-00-00	TOOL KIT
35	379-85130-80-80	REAR REFLECTOR ASY
36	95707-09030-00	NUT, FLANGE (DOM)
37	379-85130-80-80	REAR REFLECTOR ASY
38	95707-09030-00	NUT, FLANGE (DOM)
39	40V-21868-00-00	BRACKET, REAR STAY
40	90149-04276-00	SCREW SPEC'L SHAPE
41	90201-04018-00	WASHER (AFM)
42	99807-04100-00	NUT UNRES
43	40V-84751-00-00	BRACKET, LICENSE
44	90201-04030-00	WASHER PLATE
45	99807-04100-00	NUT UNRES

Catalog Title:  
**1999 YZFR1L**

Book No.  
**C-4**

Block Title:  
**FRAME**

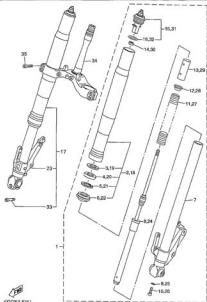
Ref. No.	Part No.	Description
1	4KV-21115-00-00	FRAME COMP.
2	1KT-21746-00-00	UNAVAILABLE
3	91C14-10040-00	BOLT, SOCKET
4	92903-10000-00	WASHER
5	91C14-12000-00	BOLT
6	92907-12000-00	WASHER
7	90387-1212P-00	COLLAR
8	95037-08000-00	BOLT, SMALL FLANGE
9	90185-10170-00	NUT, SELF-LOCKING
10	90109-10400-00	BOLT
11	90387-1112P-00	COLLAR
12	95037-08000-00	BOLT, SMALL FLANGE
13	90109-10400-00	BOLT
14	90185-10170-00	NUT, SELF-LOCKING
15	90308-15200-00	PLUG (ZG4)
16	90308-15200-00	PLUG
17	90308-07124-00	PLUG, SPEC'L SHAPE
18	4KV-2117M-00-00	COVER 2
19	4KV-20371-00-00	DAMPER
20	4KV-2137Y-00-00	GUIDE, AIR
21	1KT-21746-00-00	UNAVAILABLE
22	4KV-2117P-00-00	COVER
23	90289-07077-00	RIVET
24	90289-07084-00	RIVET
25	95037-08000-00	BOLT, FLANGE (LUG)
26	4KV-21446-00-00	STAY, MUFFLER 3
27	4KV-27424-00-00	DAMPER, FOOTREST 3
28	90387-08200-00	COLLAR
29	4KV-2117M-00-00	COVER 3
30	4KV-2117N-00-00	COVER 4
31	90104-09013-00	SCREW, BINDING
32	4KV-2116J-00-00	BRACKET T
33	95037-08018-00	BOLT, SOCKET
34	4KV-2116A-00-00	STAY 1
35	90387-08100-00	COLLAR



Catalog Title:  
1999 YZFR1L

Stock No.  
D-3

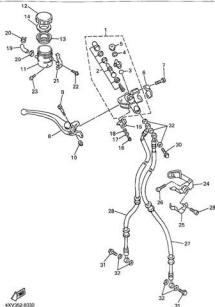
Stock Title:  
FRONT FORK



Ref. No.	Part No.	Description
1	4XV-23103-00-00	FRONT FORK ASSY (L)
2	4XV-23136-00-00	• TUBE, OUTER (RIGHT)
3	36Y-23146-15-00	• WASHER, OIL SEAL
4	4XV-23145-00-00	• OIL SEAL
5	26H-23156-00-00	• CLIP, OIL SEAL
6	46B-23144-00-00	• SEAL, DUST
7	4XV-23110-00-00	• INNER TUBE COMP. 1
8	4XV-23170-00-00	• CYLINDER COMP., FR
9	2K6-23158-15-00	• GASKET
10	3LC-23181-00-00	• BOLT, HEX SOCKET HEAD
11	4XV-23143-00-00	• SPRING, FRONT FORK
12	4XV-23142-00-00	• SEAT, SPRING UPPER
13	4XV-23118-00-00	• SPACER
14	3LC-23357-06-00	• NUT
15	4XV-23111-00-00	• BOLT, CAP
16	3XL-23147-15-00	• O-RING
17	4XV-23103-00-00	FRONT FORK ASSY (R)
18	4XV-23136-00-00	• TUBE, OUTER (RIGHT)
19	36Y-23146-15-00	• WASHER, OIL SEAL
20	4XV-23145-00-00	• OIL SEAL
21	26H-23156-00-00	• CLIP, OIL SEAL
22	46B-23144-00-00	• SEAL, DUST
23	4XV-23120-00-00	• INNER TUBE COMP. 2
24	4XV-23170-00-00	• CYLINDER COMP., FR
25	2K6-23158-15-00	• GASKET
26	3LC-23181-00-00	• BOLT, HEX SOCKET HEAD
27	4XV-23141-00-00	• SPRING, FRONT FORK
28	4XV-23142-00-00	• SEAT, SPRING UPPER
29	4XV-23118-00-00	• SPACER
30	3LC-23357-06-00	• NUT
31	4XV-23111-00-00	• BOLT, CAP
32	3XL-23147-15-00	• O-RING
33	91314-08040-00	• BOLT (LIP)
34	4XV-23340-00-00	UNDER BRACKET COMP
35	91314-08030-00	BOLT (25M)

Catalog Title:  
**1999 YZFR1L**

Block No.  
**E-2**



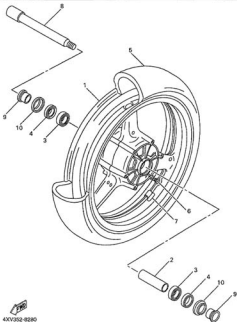
Block Title:  
**FRONT MASTER CYLINDER**

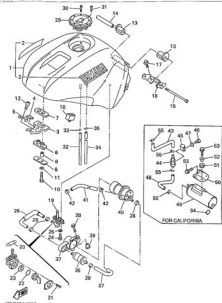
Ref. No.	Part No.	Description
1	40V-W2507-00-00	MASTER CYLINDER SU
2	40V-W2041-00-00	= CYLINDER KIT, MAST
3	910 10-15020-00	= O-RING
4	2PV-25896-00-00	= CIRCLIP
5	3PV-25884-00-00	= COVER, DUST
6	56A-25867-00-00	BRACKET MASTER CYL.
7	95020-06028-00	BOLT, FLANGE
8	40V-03622-00-00	LEVER 2
9	3PV-25886-00-00	BOLT, LEVER
10	95005-06100-00	NUT, U
11	3PV-25884-00-00	TANK RESERVOIR
12	306A-25852-00-00	CAP RESERVOIR
13	3PV-25884-00-00	DIAPHRAGM RESERVOIR
14	2J2-25855-00-00	BUSH, DIAPHRAGM
15	3PV-83980-00-00	STOP SWITCH ASY
16	88920-04012-00	SCREW PANHEAD
17	82902-04100-00	WASHER, SPRING
18	82902-04800-00	WASHER
19	3TJ-25827-01-00	HOSE
20	3PA-24256-00-00	CLIP, PIPE 1
21	3PV-25880-00-00	HOLDER
22	306A-25881-00-00	SCREW W/WASHER
23	91317-06010-00	BOLT, HEX SRT HEAD
24	40V-25867-00-00	HOLDER, BRAKE HOSE
25	40V-2581A-00-00	HOLDER, BREAK HOSE
26	91317-06010-00	BOLT, HEX SRT HEAD
27	40V-25873-00-00	HOSE, BRAKE 1
28	40V-25873-00-00	HOSE, BRAKE 2
29	91317-06010-00	BOLT (RM)
30	90401-10160-00	BOLT, UNCOMMON
31	90401-10172-00	BOLT, UNION
32	90201-10118-00	WASHER, PLATE



Stock Title:  
FRONT WHEEL

Ref. No.	Part No.	Description
1	4XV-25188-00-33	CAST WHEEL, FRONT
1	4XV-25188-00-38	CAST WHEEL, FRONT
2	4XV-25117-00-00	SPACER, BEARING
3	93308-00420-00	BEARING
4	93106-28643-00	OIL SEAL
5	94112-17151-00	TIRE (120/70 ZR17
6	93905-00230-00	VALVE RM
7	2RL-25399-00-00	BALANCER WHEEL
7	2RL-25398-10-00	BALANCER WHEEL
7	2RL-25398-20-00	BALANCER WHEEL
8	4XV-25181-00-00	AXLE, WHEEL
9	4XV-25189-00-00	COLLAR, WHEEL
10	4XV-25118-00-00	COVER, HUB DUST

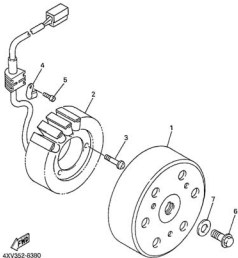


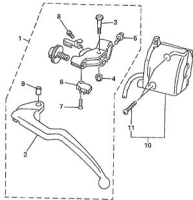
Catalog Title:  
1999 YZFR1LBlock No.  
D-5Block Title:  
FUEL TANK

Ref. No.	Part No.	Description
1	40V-24110-30-02	FUEL TANK COMP.
1	40V-24110-30-01	FUEL TANK COMP.
2	47V-2153A-00-00	+ EMBLEM, YAMAHA
3	40V-24191-00-00	BRACKET, FUEL TANK
4	1A2-2527J-00-00	DAMPER 5
5	40V-24186-00-00	WASHER, SPECIAL
6	2GH-24181-00-00	DAMPER,LOCATING 1
7	2GH-24189-00-00	DAMPER,LOCATING 3
8	2GH-24186-00-00	WASHER,SPECIAL
9	90387-0299-00	COLLAR
10	97907-08025-00	BOLT,HEXAGON
11	92907-08690-00	WASHER (8TA)
12	91214-00016-00	BOLT,SOCKET
13	4YR-24161-03-03	DAMPER, LOCATING 1
14	90387-081W9-00	COLLAR
15	91217-08110-00	BOLT,SOCKET
16	40V-21248-00-00	BRACKET, TANK FITT1
17	90119-00044-00	BOLT, HEXAGON
18	40V-24183-00-00	DAMPER, LOCATING 3
19	40A-24500-10-00	FUEL COCK ASSY 1
20	403-24512-00-00	+ GASKET
21	88507-2509-00	+ SCREW, PAN
22	3A3-24834-00-00	+ SEAL, COCK
23	3A3-24825-00-00	+ VALVE
24	90149-08011-00	SCREW,SPECIAL SHAPE
25	90382-05190-00	WASHER,PLATE
26	40V-24311-00-00	PPE, FUEL 1
27	40V-24312-00-00	PPE 2
28	90467-13124-00	CLIP (DOM)
29	49N-24602-30-00	CAP ASSY
30	90110-05112-00	BOLT,HEX SKT HEAD
31	91217-08110-00	BOLT,SOCKET
32	90445-10328-00	UNAVAILABLE
33	90467-09096-00	CLIP,SCISSOR
34	90445-10328-00	UNAVAILABLE
35	90467-09096-00	CLIP,SCISSOR
36	1FK-24560-00-00	FILTER ASSY
37	40V-24398-00-00	BAND 1
38	90119-00096-00	BOLT (DOM)
39	90387-06021-00	COLLAR
40	45V-13807-00-00	FUEL PUMP COMP.
41	90445-142K2-00	HOSE
42	90467-13123-00	CLIP (DOM)
43	40V-24313-00-00	PPE 3
44	29H-24180-00-00	ROLL OVER VLV ASSY
45	90467-15100-00	CLAMP
46	88507-25012-00	SCREW,PANHEAD
47	92907-25600-00	WASHER (1RW)
48	40V-24174-00-00	PPE 4
49	40V-24170-00-00	CANISTER ASSY
50	40V-2419P-00-00	BRACKET, CANSTOR
51	90465-13163-00	GROMMET
52	90387-062L2-00	COLLAR
53	95027-06016-00	BOLT,SMALL FLANGE
54	90445-11418-00	HOSE
55	90467-09006-00	CLIP,SCISSOR

43V9100-0000

Ref. No.	Part No.	Description
1	4XV-81450-00-00	ROTOR ASSY
2	4XV-81410-00-00	STATOR ASSY
3	92017-08030-00	BOLT,BUTTON
4	90483-10180-00	CLAMP
5	91317-08013-00	BOLT,HEX SKT HEAD
6	98125-100A6-00	BOLT, WASHER BASED
7	98201-100J7-00	WASHER, PLATE



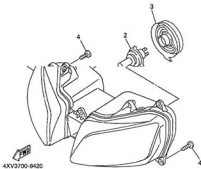
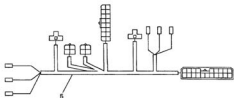


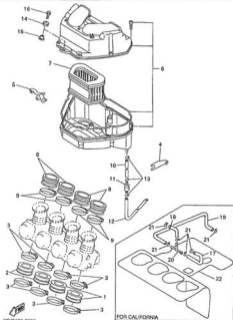
Ref. No.	Part No.	Description
1	430V-82910-10-00	LEVER HOLDER ASSY
2	430V-82912-10-00	= UNAVAILABLE
3	430V-82945-00-00	= BOLT, LEVER
4	99807-08100-00	= NUT, J
5	99827-08020-00	= BOLT
6	430V-82917-00-00	= SWITCH
7	98707-03010-00	= SCW, CIVL, HD
8	99807-04010-00	= SCREW PAN-HEAD
9	430V-83813-00-00	= COLLAR, LEVER 1
10	430V-83873-01-00	SWITCH, HANDLE 3
11	99807-09020-00	= SCREW PAN HEAD
12	4UN-83975-00-00	SWITCH, HANDLE 2
13	99807-09020-00	= SCREW PAN HEAD



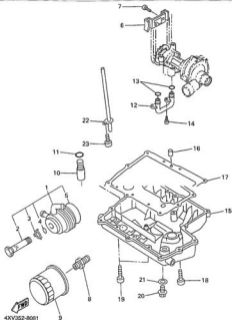
Block Title:  
HEADLIGHT

Ref. No.	Part No.	Description
1	4XV-84310-20-00	HEADLIGHT UNIT ASS
2	8V0-84314-00-00	BULB, HL, 12V/35/55W
3	4XV-84387-00-00	COVER, SOCKET
4	9T707-80018-00	SCREW, TRUSS
5	4XV-84399-10-00	CORD, HEADLIGHT





Ref. No.	Part No.	Description
1	40V-13697-00-00	JOINT, CARBURETOR
2	40V-13596-00-00	JOINT, CARBURETOR
3	90450-57044-00	HOSE CLAMP ASSY
4	40V-14414-00-00	STAY 2
5	40V-14413-00-00	STAY 1
6	40V-14491-00-00	AIR CLEANER CASE A
7	40V-14491-00-00	ELEMENT, AIR CLEAN
8	40V-14453-00-00	JOINT, AIR CLEANER
9	90450-75063-00	HOSE CLAMP ASSY
10	90445-11492-00	HOSE
11	40T-2148Y-00-00	FILTER ASSY
12	90445-11376-00	HOSE
13	90457-70041-00	CLIP, SCISSOR
14	90480-12314-00	GROMMET
15	90387-06526-00	COLLAR
16	95817-06020-00	BOLT, FLANGE
17	40V-14485-00-00	PIPE
18	40V-14486-00-00	PIPE
19	40V-14433-00-00	PIPE
20	90413-08013-00	WAY 3
21	90467-10006-00	CLIP, SCISSOR
22	40V-12682-00-00	PROTECTOR, HEAT



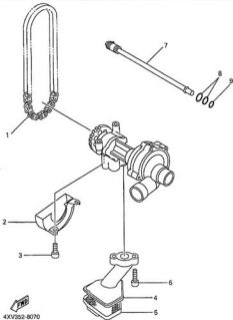
Block Title:  
OIL CLEANER

Ref. No.	Part No.	Description
1	4KV-13470-00-00	OIL COOLER ASSY
2	4KV-12822-00-00	= BOLT, UNION
3	4KV-13473-00-00	= O-RING
4	4KV-13318-00-00	= WASHER
5	4KV-13475-00-00	= GASKET
6	4KV-13895-00-00	HOLDER
7	91317-06012-00	BOLT, HEX SKT HEAD
8	90401-20145-00	BOLT, UNION
9	3FY-13440-00-00	ELMNT ASSY, OIL CLR
10	4KV-13490-00-00	RELIEF VALVE ASSY
11	90210-15586-00	O-RING
12	4KV-13416-00-00	PIPE, OIL 1
13	90210-14079-00	O-RING
14	91317-06013-00	BOLT, HEX SKT HEAD
15	4KV-13417-00-00	COVER, STRAINER
16	99530-08013-00	PH, DOWEL
17	4KV-13414-00-00	GASKET, STRAINER C
18	91317-06025-00	BOLT (4MY)
19	90210-08026-00	BOLT, HEX SKT HEAD
20	90340-14132-00	PLUG, STRAIGHT SCREW
21	214-11189-01-00	GASKET
22	4KV-13161-00-00	PIPE, DELIVERY 1
23	91317-06012-00	BOLT, HEX SKT HEAD

Catalog Title:  
1999 YZFR1L

Stock No.  
B-2

Stock Title:  
OIL PUMP



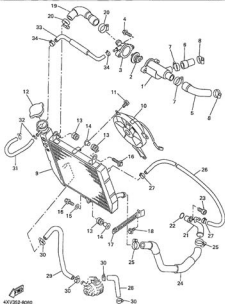
Part No.	Part No.	Description
1	9450-2676-00	CHAIN (DQ25 76L)
2	4XV-13327-00-00	COVER, PUMP GEAR
3	91317-96012-00	BOLT, HEX SKT HEAD
4	4XV-13412-00-00	HOUSING, STRAINER
5	4XV-13411-00-00	STRAINER, OIL
6	91317-96029-00	BOLT (#FL)
7	4XV-13162-00-00	PIPE, DELIVERY S
8	93210-09189-00	O-RING
9	93210-09687-00	O-RING

4XV362-8070



Catalog Title:  
1999 YZFR1L

Block No.  
A-12

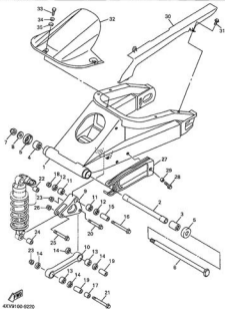


Block Title:  
RADIATOR - HOSE

Ref. No.	Part No.	Description
1	40V-12417-00-00	HOUSING, THERMOSTAT
2	4FA-12410-00-00	THERMOSTAT ASSY
3	40V-12413-00-00	COVER, THERMOSTAT
4	9937-99029-00	BOLT, FLANGE
5	40V-12577-00-00	HOSE 2
6	40V-12576-00-00	HOSE 3
7	90493-32001-00	HOSE CLAMP ASSY
8	90493-38014-00	HOSE CLAMP ASSY
9	40V-12481-00-00	RADIATOR ASSY
10	40V-12405-00-00	BLOWER ASSY
11	9937-99010-00	BOLT, FLANGE
12	4PS-12462-00-00	CAP, RADIATOR
13	90493-15263-00	GROMMET
14	99387-67391-00	COLLAR
15	99201-99071-00	WASHER, PLATE
16	9937-99029-00	BOLT, FLANGE
17	40V-12484-00-00	STAY, RADIATOR
18	9937-99012-00	BOLT, FLANGE
19	40V-12579-00-00	HOSE 4
20	90493-38040-00	HOSE CLAMP ASSY
21	40V-12484-00-00	PIPE 4
22	99210-33787-00	O-RING
23	90110-08226-00	BOLT, HEX SKT HEAD
24	40V-12681-00-00	HOSE 7
25	90493-38040-00	HOSE CLAMP ASSY
26	40V-1243A-00-00	HOSE 1
27	90487-11996-00	CLIP, SCISSOR
28	40V-12588-00-00	HOSE 5
29	40V-12588-00-00	HOSE 6
30	90493-32017-00	HOSE CLAMP ASSY
31	90445-09074-00	HOSE
32	90487-08003-00	CLIP, SCISSOR
33	40V-12582-00-00	HOSE 8
34	90487-11996-00	CLIP, SCISSOR

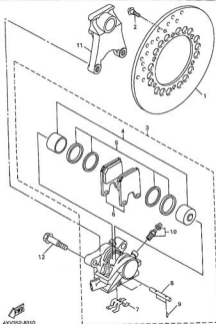
Catalog Title:  
**1999 YZFR1L**

Block No.  
**C-11**



Block Title:  
**REAR ARM**

Ref. No.	Part No.	Description
1	40V-22110-00-00	REAR ARM COMP.
2	40V-22184-00-00	BUSH
3	93315-42523-00	BEARING,CYL.#15
4	93315-42536-00	BEARING,CYL.#15
5	3FA-22128-00-00	COVER,THRUST 1
6	4FW-22141-00-00	PIVOT
7	90185-18104-00	NUT,SELF-LOCKING
8	90201-18894-00	WASHER,PLATE
9	40V-22174-00-00	ARM,RELAY
10	40V-22176-00-00	ARM 1
11	93315-31758-00	BEARING
12	93126-17871-00	OIL SEAL
13	93315-31758-00	BEARING
14	93126-17871-00	OIL SEAL
15	90387-10128-00	COLLAR
16	90105-10727-00	BOLT,WASHER BASED
17	90387-10134-00	COLLAR
18	95603-10200-00	NUT,SELF-LOCKING
19	90387-10124-00	COLLAR
20	90105-10402-00	BOLT,WASHER BASED
21	90105-10276-00	BOLT,WASHER BASED
22	90387-10134-00	COLLAR
23	95603-10200-00	NUT,SELF-LOCKING
24	90387-10124-00	COLLAR
25	90105-10402-00	BOLT,WASHER BASED
26	95603-10200-00	NUT,SELF-LOCKING
27	40V-22151-00-00	SEAL, GUARD
28	90119-06096-00	BOLT (30M)
29	90387-06173-00	COLLAR
30	40V-22311-00-00	CASE, CHAIN
31	90119-06052-00	BOLT WITH WASHER
32	40V-21850-01-P0	REAR FENDER COMP.
33	40V-21850-01-P1	REAR FENDER COMP.
34	97007-06016-00	BOLT, HEXAGON
	90387-09154-00	COLLAR
35	40V-28373-00-00	DAMPER

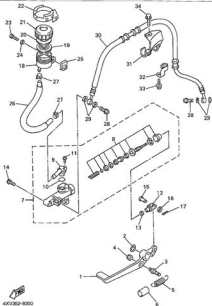


Ref. No.	Part No.	Description
1	40Y-2582W-00-00	DISC, REAR BRAKE 2
2	90109-08409-00	BOLT
3	40Y-2580W-10-00	CALIPER ASSY, REAR
4	40Y-W0007-00-00	= PISTON ASSY, CALIP
5	40Y-W0047-00-00	= CALIPER SEAL KIT
6	40Y-W0046-10-00	= UNAVAILABLE
7	40Y-2581B-00-00	= SUPPORT, PAD
8	40Y-2582J-00-00	= P/N, PAD
9	3098-25825-00-00	= CLIP, P/N PAD
10	1.0-WS048-00-00	= BLEED SCREW KIT
11	40Y-2581B-00-00	BRACKET, CALIPER
12	90109-10940-00	BOLT, WASHER BASED

Catalog Title:  
1988 YZFR1L

Stock No.  
E-7

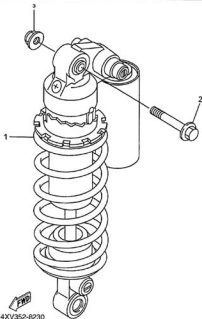
Stock Title:  
REAR MASTER CYLINDER



Ref. No.	Part No.	Description
1	4XV-17211-00-00	PEDAL, BRAKE
2	90036-17384-00	WASHER, WAVE
3	3M6-27813-00-00	PN, PEDAL CRAWK
4	90004-08100-00	NUT, U
5	90006-20071-00	SPRING, TENSION
6	90446-17348-00	HOSE (COM)
7	37U-25830-01-00	RR, MASTER CYLINDER
8	37U-W0040-01-00	= CYL, RT, MASTER
9	3LN-25824-00-00	= CONNECTOR
10	3LN-25827-00-00	= O-RING
11	3LN-25828-00-00	= SCREW SET
12	4XV-17122-00-00	JOINT
13	90007-08700-00	NUT, HEX SMALL
14	90017-08030-00	BOLT, BUTTON
15	91701-00018-00	PN, CLEVIS
16	90007-08200-00	WASHER (STA)
17	91401-16013-00	PN, COTTER
18	31A-25884-01-00	TANK, RESERVOIR
19	360-25854-01-00	DIAPHRAGM, RESERVOIR
20	32J-25885-00-00	BUSH, DIAPHRAGM
21	3K7-25862-00-00	CAP, RESERVOIR
22	3P-25868-00-00	COVER, RESERVOIR TANK
23	90007-08030-00	SCREW, PAN HEAD
24	90007-08800-00	WASHER (STA)
25	90183-00053-00	NUT, SPRING (MS)
26	4XV-25885-00-00	HOSE, RESERVOIR
27	90487-14007-00	CLIP, SCISSOR
28	90401-10172-00	WASHER, UNION
29	90001-10118-00	WASHER, PLATE
30	4XV-25874-00-00	HOSE, BRAKE
31	4XV-25886-00-00	HOLDER, BRAKE HOSE
32	4PM-25876-00-00	HOLDER, BRAKE HOSE 2
33	90007-08010-00	BOLT, FLANGE (M7)
34	90179-00053-00	BOLT, WITH WASHER

Block Title  
REAR SUSPENSION

Ref. No.	Part No.	Description
1	40V-23210-10-00	SHOCK ABSORBER ASSY.
2	90106-10076-00	BOLT, WASHER BASED
3	95467-10006-00	NUT, SELF-LOCKING

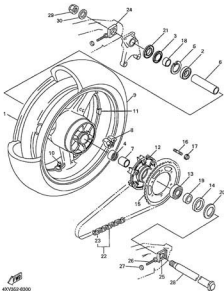


4XV352-0230

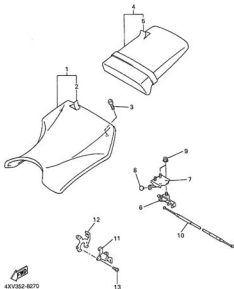
Catalog Title:  
1999 YZFR1L

Block No.  
D-10

Block Title:  
REAR WHEEL



Ref. No.	Part No.	Description
1	4XV-25338-00-00	CAST WHEEL, REAR
1	4XV-25338-00-00	CAST WHEEL, REAR
2	93306-20567-00	BEARING (27°)
3	93105-35042-00	OIL SEAL
4	93317-43569-00	BEARING
5	96009-02005-00	CIRCLIP
6	4XV-25217-00-00	SPACER, BEARING
7	4XV-25263-00-00	COLLAR, WHEEL
8	4XV-25264-00-00	DAMPER
9	94179-17126-00	TIRE (180SS 2R17)
10	93060-90030-00	VALVE, PIN
11	2R6-25399-00-00	BALANCER, WHEEL
11	2R6-25399-10-00	BALANCER, WHEEL
11	2R6-25399-20-00	BALANCER, WHEEL
12	4XV-25308-10-00	CLUTCH, HUB
13	93306-20948-00	BEARING
14	93105-40041-00	OIL SEAL
15	4XV-25443-20-00	SPROCKET, DRIVEN (
16	90176-10488-00	BOLT, STUD
17	95667-10000-00	NUT, SELF-LOCKING
18	4XV-25377-00-00	COLLAR, WHEEL
19	4XV-25276-00-00	COLLAR, WHEEL
20	4XV-25367-00-00	COVER, HUB, DUST
21	4XV-25327-00-00	COVER, PLATE
22	94681-99114-00	NO LONGER AVAILABLE
23	94681-99031-00	+ JOINT, CHAIN
24	4XV-25368-00-00	PULLER, CHAIN 1
25	4XV-25368-00-00	PULLER, CHAIN 2
26	90101-08798-00	BOLT (DOM)
27	95307-08800-00	NUT (STA)
28	4XV-25381-00-00	AXLE, WHEEL
29	90185-24195-00	NUT, SELF-LOCKING
30	90301-05793-00	WASHER, PLATE



Stock Title:  
SEAT

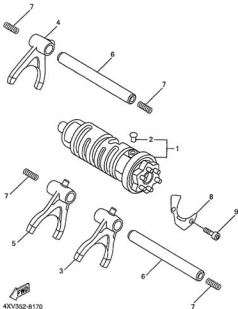
Ref. No.	Part No.	Description
1	40V-34710-10-00	SINGLE SEAT ASSY
2	40V-34709-10-00	+ COVER, SEAT
3	90110-08034-00	BOLT, HEXAGON SOCK
4	40V-34708-10-00	TANDEM SEAT ASSY
5	40V-34701-10-00	+ COVER, TANDEM SEAT
6	48P-34780-00-00	SEAT BRACKET ASSY
7	40V-34793-00-00	PLATE
8	90308-07043-00	PLUG, SPEC'L SHAPE
9	95707-08800-00	NUT, FLANGE (MM)
10	4084-34788-01-00	CABLE, SEAT LOCK
11	3TV-W0470-00-00	SEAT LOCK ASSY
12	40V-01176-00-00	LOCK, STAY
13	90140-06008-00	SCREW, SPEC'L SHAPE

Catalog Title  
1999 YZFR1L

Stock No.  
C-4

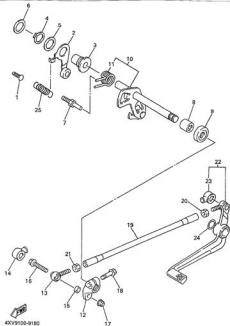
Stock Title  
SHIFT CAM - FORK

Ref. No.	Part No.	Description
1	4XV-18540-00-00	SHIFT CAM ASSY
2	136-18542-00-00	= POINT, NEUTRAL
3	4XV-18511-00-00	FORK, SHIFT 1
4	4XV-18512-00-00	FORK, SHIFT 2
5	4XV-18513-00-00	FORK, SHIFT 3
6	4XV-18531-00-00	BAR, SHIFT FORK GU
7	80501-0641-1-00	SPRING, COMPRESSIO
8	4XV-18536-00-00	STOPPER, SHIFT BAR
9	90110-06229-00	BOLT, HEX SKT HEAD



4XV362-8170



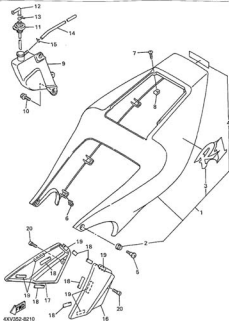


Ref. No.	Part No.	Description
1	130-18346-00-00	HOOK, SPRING
2	43V-18140-00-00	STOPPER LEVER ASSY
3	90387-127V3-00	COLLAR
4	90606-17400-00	CIRCLIP
5	90201-17704-00	WASHER, PLATE
6	90201-18488-00	WASHER, PLATE
7	43V-18107-00-00	STOPPER, SCREW
8	90315-11006-00	BEARING, CYL. #15
9	93101-12004-00	CL. SEAL, SD-TYPE
10	9EG-18101-00-00	SHIFT SHAFT ASSY
11	90206-09081-00	= SPRING, TORSION
12	9EG-18113-00-00	ARM, SHIFT
13	37C-18118-00-00	JOINT, ROD 1
14	43V-18104-00-00	COVER, DUST
15	90381-06372-00	COLLAR
16	90304-06030-00	BOLT, FLANGE
17	90304-06020-00	NUT, U
18	90304-06020-00	BOLT, FLANGE
19	43V-18115-00-00	ROD, SHIFT
20	90170-06028-00	NUT, HEXAGON
21	90304-06100-00	NUT
22	43V-18110-10-00	SHIFT PEDAL ASSY
23	43V-18104-00-00	= COVER, DUST
24	90206-17084-00	WASHER, WAVE
25	90506-52516-00	SPRING, TENSION

Catalog Title:  
**1999 YZFR1L**

Stock No.  
**C-10**

Stock Title:  
**SIDE COVER**



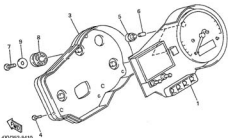
Part No.	Part No.	Description
1	40V-Y2171-15-P1	COVER, SIDE 1
1	40V-Y2171-75-P0	COVER, SIDE 1
2	90480-13388-00	= CIRCLIP
3	40V-21781-10-00	= EMBLEM 1
3	40V-21781-20-00	= EMBLEM 1
4	90231-00090-00	= EMBLEM, YAMAHA
4	90234-00090-00	= EMBLEM, YAMAHA
5	90150-06036-00	SCREW, ROUND HEAD
6	90289-07077-00	RIVET
7	90154-05058-00	SCREW, BINDING(SXV)
8	90183-05061-00	MUT, SPRING
9	40V-21875-00-00	TANK, RECOVERY
10	90110-06117-00	BOLT
11	40V-21875-00-00	CAP
12	26H-21825-00-00	ELBOW
13	90487-11019-00	CLIP, PIPE
14	90485-08146-00	HOSE
15	90487-08003-00	CLIP, SCISSOR
16	40V-24129-10-00	COVER, SIDE 1
17	40V-24139-10-00	COVER, SIDE 2
18	40V-24110-00-00	HOOK
19	40V-24111-00-00	HOOK, SIDE COVER 2
20	90110-05201-00	BOLT, HEXAGON

40V052-0210

Stock Title:

**METER**

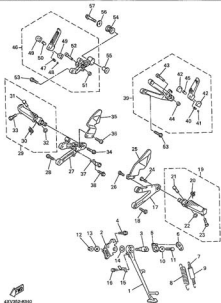
Ref. No.	Part No.	Description
1	4KV-82670-00-00	SPEEDOMETER ASSY
2	4KV-82638-00-00	CASE, METER UPPER
3	4KV-82673-00-00	CASE, SPEEDOMETER
4	97703-80220-00	SCREW, TAPPING
5	4YR-82634-00-00	SOCKET, NEUTRAL
6	4YR-82617-10-00	BALL (12V-20V TS)
7	97703-80216-00	SCREW, TAPPING
8	4KV-82613-00-00	DAMPER
9	92201-08725-00	WASHER, PLATE



Catalog Title:  
1999 YZFR1L

Stock No.  
E-4

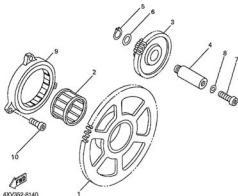
Stock Title:  
STAND - FOOTREST



43V352-03A2

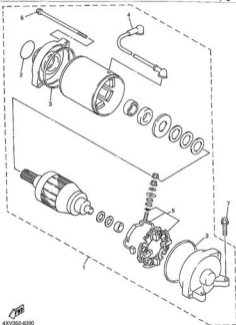
Ref. No.	Part No.	Description
1	43V-21311-00-00	STAND, SIDE
2	44X-27321-00-00	BRACKET, SIDE STAND
3	44X-27351-00-00	GUIDE, SIDE STAND
4	90199-10907-00	BOLT
5	36Y-27352-00-00	HOOK, SIDE STAND
6	36Y-27315-00-00	LINK, SIDE STAND
7	90506-10224-00	SPRING, TENSION
8	90506-20225-00	SPRING, TENSION
9	17X-27351-00-00	GUIDE, SIDE STAND
10	90201-00109-00	WASHER, PLATE BAT
11	90101-08602-00	BOLT, HEXAGON
12	90607-10200-00	NUT, SELF-LOCKING
13	90201-10111-00	WASHER, PLATE
14	90201-146F9-00	WASHER, PLATE
15	44X-27315-00-00	LINK, SIDE STAND
16	90110-06226-00	BOLT, HEX SKT HEAD
17	43V-27443-00-00	BRACKET 2
18	90109-09004-00	BOLT
19	43V-27410-00-00	FRONT FOOTREST ASS
20	90508-18389-00	= SPRING, TORSION
21	90243-00029-00	= PIN
22	90201-09042-00	= WASHER, PLATE
23	90109-00303-00	= BOLT
24	90109-103A8-00	BOLT
25	43V-27445-00-00	PLATE 1
26	90148-06233-00	SCREW(30G)
27	43V-27443-00-00	BRACKET 3
28	90109-09004-00	BOLT
29	43V-27420-00-00	FRONT FOOTREST ASS
30	90508-18490-00	= SPRING, TORSION
31	90243-00029-00	= PIN
32	90201-09042-00	= WASHER, PLATE
33	90109-00303-00	= BOLT
34	90109-103A8-00	BOLT
35	43V-27446-00-00	PLATE 2
36	90148-06233-00	SCREW(30G)
37	33V-21443-00-00	STAY, STOP SWITCH
38	90607-09008-00	BOLT, FLANGE
39	43V-27430-00-00	REAR FOOTREST ASSY
40	90501-12743-00	= SPRING, COMPRESSION
41	93501-04011-00	= BALL 1/4
42	11X-27437-00-00	= WASHER, SPECIAL
43	91314-09045-00	= BOLT, SOCKET
44	95604-05200-00	= NUT-U
45	90387-06418-00	= COLLAR (24R)
46	43V-27440-00-00	REAR FOOTREST ASSY
47	90501-12743-00	= SPRING, COMPRESSION
48	93501-04011-00	= BALL 1/4
49	11X-27437-00-00	= WASHER, SPECIAL
50	90387-06418-00	= COLLAR (24R)
51	95604-05200-00	= NUT-U
52	91314-09045-00	= BOLT, SOCKET
53	90109-08506-00	BOLT
54	36Y-27424-00-00	DAMPER, FOOTREST 2
55	90387-10636-00	COLLAR
56	90201-10668-00	WASHER, PLATE
57	90109-10050-00	BOLT, FLANGE

1	40V-15515-00-00	GEAR 3
2	93310-33859-00	BEARING
3	40V-15517-00-00	GEAR, IDLER 2
4	40V-15521-00-00	SHAFT 1
5	93410-08073-00	CIRCLIP,S-TYPE
6	90201-08089-00	WASHER
7	92517-06014-00	BOLT,BUTTON
8	90430-06014-00	GASKET
9	40V-15570-00-00	STARTER CLUTCH ASS
10	91317-06016-00	BOLT (4MM)

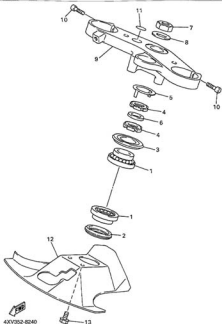


Block Title:  
STARTING MOTOR

Ref. No.	Part No.	Description
1	4XV-81800-00-00	STARTING MOTOR ASS
2	3FK-81847-00-00	= O-RING
3	11M-81844-00-00	= GSKT
4	4XV-81816-00-00	= CORD, STARTER MOTO
5	3AJ-81801-00-00	= BRUSH SET
6	3AJ-81826-00-00	= BOLT
7	95C27-08025-00	BOLT FLANGE



Stock Title:  
STEERING

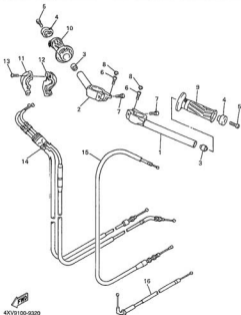


Ref. No.	Part No.	Description
1	90398-90332-00	BEARING, SPECIAL
2	3FV-23462-00-00	SEAL, STEERING
3	40V-23418-00-00	COVER, BALL RACE 1
4	90179-30891-00	NUT
5	40V-23418-00-00	WASHER, SPECIAL
6	90202-30235-00	WASHER, PLATE
7	90170-28419-00	NUT
8	90201-28118-00	WASHER, PLATE
9	40V-23425-00-00	CROWN, HANDLE
10	91314-08030-00	BOLT (30M)
11	40V-23418-00-00	EMBLEM
12	40V-23818-00-00	COVER, STEERING
13	90119-90114-00	BOLT, WITH WASHER

Catalog Title:  
1999 YZFR1L

Stock No.  
E-1

Stock Title:  
STEERING HANDLE - CABLE



Ref. No.	Part No.	Description
1	4XV-26121-00-00	HANDLEBAR (LEFT)
2	4XV-26122-00-00	HANDLEBAR (RIGHT)
3	4XV-23434-00-00	HOLDER, DAMPER
4	4XV-26246-00-00	END, GRIP
5	91317-06025-00	BOLT (M5)
6	91317-06025-00	BOLT (M5)
7	91314-06030-00	BOLT (M6)
8	2H9-23489-00-00	CAP,BOLT
9	4FR-36241-01-00	GRIP LH
10	4FR-36240-00-00	GRIP ASSY
11	3XW-26221-01-00	CAP,GRIP UPPER
12	3XW-26232-01-00	CAP,GRIP LOWER
13	88967-05035-00	SCREW, PAN HEAD
14	4XV-26303-01-00	THROTTLE CABLE ASSY
15	4XV-26305-00-00	CABLE, CLUTCH
16	4XV-26321-00-00	CABLE, STARTER 1



4XV0100-0020



Catalog Title:

1999 YZFR1L

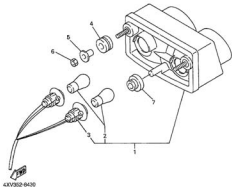
Block No.

F-6

Block Title:

TAILLIGHT

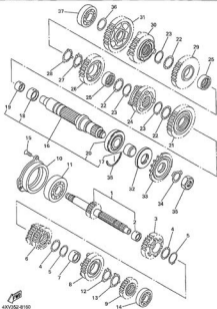
Ref. No.	Part No.	Description
1	40V-54710-10-00	TAILLIGHT UNIT ASS
2	137-54714-00-00	= BULB, TL 12V/218W
3	3LR-5473A-00-00	= CORD ASSY
4	90483-18278-00	GROMMET
5	90387-06033-00	COLLAR
6	90307-09800-00	NUT (STA)
7	90483-18171-00	GROMMET



Catalog Title:  
1999 YZFR1L

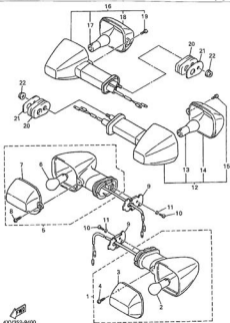
Block No.  
C-2

Block Title:  
TRANSMISSION



Ref. No.	Part No.	Description
1	4XV-W1741-00-00	MAIN AXLE ASSY
2	90287-28118-00	+ COLLAR
3	4XV-17151-00-00	GEAR, 5TH PINION
4	90209-25343-00	WASHER
5	90440-28062-00	CIRCLIP, OUTER
6	4XV-17121-00-00	GEAR, 3RD PINION
7	90287-28103-00	COLLAR
8	4XV-17181-00-00	GEAR, 6TH PINION
9	4XV-17121-00-00	GEAR, 2ND PINION
10	4XV-15183-00-00	HOUSING, BEARING 1
11	93306-37307-00	BEARING
12	90209-25349-00	WASHER
13	90209-25350-00	WASHER
14	93306-37308-00	BEARING
15	90148-06288-00	SCREW, SPEC'L SHAPE
16	4XV-W1742-00-00	DRIVE AXLE ASSY
17	90287-28117-00	+ COLLAR
18	90287-28112-00	+ COLLAR
19	90287-28114-00	+ COLLAR
20	93306-28705-00	+ BEARING
21	4XV-17221-00-00	GEAR, 2ND WHEEL
22	90209-28244-00	WASHER
23	90440-28062-00	CIRCLIP, OUTER
24	4XV-17261-00-00	GEAR, 6TH WHEEL
25	90287-2810V-00	COLLAR
26	4XV-17241-00-00	GEAR, 4TH WHEEL
27	90209-28245-00	WASHER
28	90209-28243-00	WASHER
29	4XV-17231-00-00	GEAR, 3RD WHEEL
30	4XV-17251-00-00	GEAR, 5TH WHEEL
31	4XV-17211-00-00	GEAR, 1ST WHEEL
32	90182-45485-00	OIL SEAL
33	4XV-17460-00-00	SPROCKET, DRIVE
34	90215-28233-00	WASHER, LOCK
35	90179-22983-00	NUT, SPEC'L SHAPE
36	90281-22414-00	WASHER, PLATE
37	93306-37209-00	BEARING
38	90440-72549-00	CIRCLIP, OUTER

Stock Title:  
FLASHER LIGHT

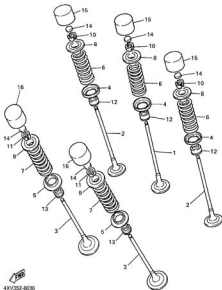


Ref. No.	Part No.	Description
1	4JH-82310-11-00	FRONT FLASHER LITE
2	256-84714-01-00	= BULB, TL 12V/21RW
3	4JH-82330-10-00	= LENS, FLASHER
4	9T702-40810-00	= SCREW, TAPPING
5	4JH-82320-11-00	FRONT FLASHER LIGHT ASSEMBLY
6	256-84714-01-00	= BULB, TL 12V/21RW
7	4JH-82340-10-00	= LENS, FLASHER 2
8	9T702-40810-00	= SCREW, TAPPING
9	4JH-82318-00-00	STAY, FLASHER 1
10	98507-04008-00	SCREW, PAN HEAD
11	92807-04600-00	WASHER (JF3)
12	4JH-82330-20-00	R FLASHER LITE ASY
13	256-82311-10-00	= BULB, TS 12V/21W
14	4JH-82330-10-00	= LENS, FLASHER
15	9T702-40810-00	= SCREW, TAPPING
16	4JH-82340-20-00	R FLASHER LITE ASY
17	256-82311-10-00	= BULB, TS 12V/21W
18	4JH-82340-10-00	= LENS, FLASHER 2
19	9T702-40810-00	= SCREW, TAPPING
20	4FM-82345-00-00	PLUG, BLIND
21	4FM-82369-00-00	STAY, FLASHER
22	98707-08500-00	NUT, FLANGE (4MM)

Catalog Title:  
1989 YZFR1L

Block No.  
A-7

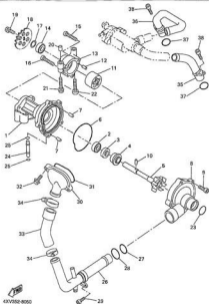
Block Title:  
VALVE



Ref. No.	Part No.	Description
1	40V-12111-00-00	VALVE, INTAKE
2	40V-12112-00-00	VALVE, INTAKE 2
3	40V-12101-00-00	VALVE, EXHAUST
4	1HX-12116-00-00	SEAT, VALVE SPRING
5	30M-12120-00-00	SEAT, VALVE SPRING
6	40V-12113-00-00	SPRING, VALVE INVE
7	40V-12114-00-00	SPRING, VALVE OUTE
8	1HX-12117-00-00	RETAINER, VALVE SP
9	1HW-12117-00-00	RETAINER, VALVE SPR
10	1HX-12116-00-00	COTTER, VALVE
11	1HW-12116-00-00	COTTER, VALVE
12	4TV-12119-00-00	ADJUSTING, VALVE STEM
13	40V-12119-00-00	ADJUSTING, VALVE STEM
14	1HX-12166-00-00	PAD, ADJUSTING
14	1HX-12166-20-00	PAD, ADJUSTING
14	1HX-12166-40-00	PAD, ADJUSTING
14	1HX-12166-60-00	PAD, ADJUSTING
14	1HX-12166-80-00	PAD, ADJUSTING
14	1HX-12166-40-00	PAD, ADJUSTING
14	1HX-12166-F0-00	PAD, ADJUSTING
14	1HX-12166-H1-00	PAD, ADJUSTING
14	1HX-12166-H3-00	PAD, ADJUSTING
14	1HX-12166-M1-00	PAD, ADJUSTING
14	1HX-12166-R1-00	PAD, ADJUSTING
14	1HX-12166-U1-00	PAD, ADJUSTING
14	1HX-12166-W1-00	PAD, ADJUSTING
14	1HX-12166-Y1-00	PAD, ADJUSTING
14	1HX-12166-11-00	PAD, ADJUSTING
14	1HX-12166-31-00	PAD, ADJUSTING
14	1HX-12166-50-00	PAD, ADJUSTING
14	1HX-12166-70-00	PAD, ADJUSTING
14	1HX-12166-90-00	PAD, ADJUSTING
14	1HX-12166-60-00	PAD, ADJUSTING
14	1HX-12166-00-00	PAD, ADJUSTING
14	1HX-12166-J0-00	PAD, ADJUSTING
14	1HX-12166-L0-00	PAD, ADJUSTING
14	1HX-12166-N0-00	PAD, ADJUSTING
14	1HX-12166-T0-00	PAD, ADJUSTING
15	3LA-12153-00-00	LIFTER, VALVE
15	3LA-12153-20-00	LIFTER, VALVE
16	3FA-12153-00-00	LIFTER, VALVE
16	3FA-12153-20-00	LIFTER, VALVE

Catalog Title:  
1999 YZFR1L

Stock No.  
A-10



Stock Title:  
WATER PUMP

Ref. No.	Part No.	Description
1	40V-12421-00-00	HOUSING, WATER PUM
2	93308-00106-90	BEARING
3	93103-12370-90	OIL SEAL
4	11H-12488-00-00	SEAL MECHANICAL
5	40V-12480-00-00	IMPELLER SHAFT ASS
6	40V-12429-00-00	O-RING
7	93804-10011-90	PINUDWEI
8	40V-12423-00-00	COVER, HOUSING
9	91317-06020-90	BOLT (4MY)
10	93803-17010-90	PINUDWEI
11	40V-12380-00-00	ROTOR ASSY 1
12	93803-12007-90	PINUDWEI
13	40V-13304-00-00	HOUSING, ROTOR
14	93308-00106-90	BEARING
15	91317-06035-90	BOLT (4MY)
16	91317-06040-90	BOLT, HEX SKT HEAD
17	90301-12541-90	WASHER/PLATE
18	40V-13350-00-00	SPROCKET, DRIVEN
19	90109-06104-00	BOLT, FLANGE
20	91808-30031-90	PINUDWEI
21	95817-06045-90	BOLT, FLANGE
22	91317-06045-90	BOLT (4MY)
23	93210-00142-00	O-RING
24	40V-12485-00-00	PIPE 5
25	93210-06667-00	O-RING
26	40V-12481-00-00	PIPE 1
27	93210-238A1-00	O-RING
28	93210-27370-00	O-RING
29	90110-96226-00	BOLT, HEX SKT HEAD
30	40V-12488-00-00	JOINT 1
31	93210-47670-00	O-RING
32	96027-06020-00	BOLT
33	40V-12576-00-00	HOSE 1
34	90466-38040-00	HOSE CLAMP ASSY
35	40V-12482-00-00	PIPE 2
36	40V-12483-00-00	PIPE 3
37	93210-18417-00	O-RING
38	91317-06016-00	BOLT, HEX SKT HEAD

43V552-8000